



# DP70NMS

Preliminary specifications

**Engine powered lift trucks**

7.0 tonnes

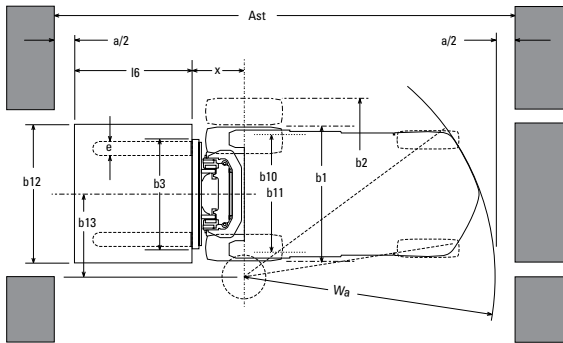
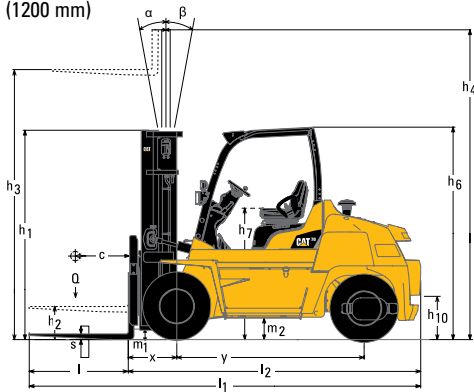


<b>Characteristics</b>			
1.1	Manufacturer (abbreviation)		Cat Lift Trucks
1.2	Manufacturer's model designation		<b>DP70NMS</b>
1.3	Power source: (battery, diesel, LP gas, petrol)		Diesel
1.4	Operator type: pedestrian, (operator)-standing, -seated		Seated
1.5	Load capacity	Q (kg)	7000
1.6	Load centre distance	c (mm)	600
1.8	Load distance, axle to fork face	x (mm)	585
1.9	Wheelbase	y (mm)	2300
<b>Weight</b>			
2.1	Truck weight, without load / including battery (simplex mast, lowest lift height)	kg	9470
2.2	Axle loading with maximum load, front/rear (simplex mast, lowest lift height)	kg	14910 / 1560
2.3	Axle loading without load, front/rear (simplex mast, lowest lift height)	kg	4270 / 5200
<b>Wheels, Drive Train</b>			
3.1	Tyres: V=solid, L=pneumatic, SE=solid pneumatic - front/rear		L
3.2	Tyre dimensions, front		8.25X15-12PR
3.3	Tyre dimensions, rear		8.25X15-12PR
3.5	Number of wheels, front/rear (x=driven)		4X / 2
3.6	Track width (centre of tyres), front	b10 (mm)	1650
3.7	Track width (centre of tyres), rear	b11 (mm)	1650
<b>Dimensions</b>			
4.1	Mast tilt, forwards/backwards	$\alpha/\beta$ °	6 / 12
4.2	Height with mast lowered (see tables)	h1 (mm)	2720
4.3	Free lift (see tables)	h2 (mm)	200
4.4	Lift height (see tables)	h3 (mm)	3300
4.5	Overall height with mast raised	h4 (mm)	4277
4.7	Height to top of overhead guard	h6 (mm)	2610
4.8	Seat height	h7 (mm)	1592
4.12	Tow coupling height	h10 (mm)	485
4.19	Overall length	l1 (mm)	4800
4.20	Length to fork face (includes fork thickness)	l2 (mm)	3580
4.21	Overall width	b1/b2 (mm)	2170
4.22	Fork dimensions (thickness, width, length)	s, e, l (mm)	60 / 150 / 1220
4.23	Fork carriage to DIN 15 173 A/B/no		-
4.24	Fork carriage width	b3 (mm)	1600
4.31	Ground clearance under mast, with load	m1 (mm)	170
4.32	Ground clearance at centre of wheelbase, with load (forks lowered)	m2 (mm)	263
4.33	Working aisle width with 1000 x1200 mm pallets, crosswise	Ast (mm)	5095
4.34a	Working aisle width with 800 x1200 mm pallets, lengthwise	Ast (mm)	5290
4.35	Turning circle radius	Wa (mm)	3310
4.36	Minimum distance between centres of rotation	b13 (mm)	1260
<b>Performance</b>			
5.1	Travel speed, with/without load	km/h	22.5 / 28.0
5.2	Lifting speed, with/without load	m/s	0.43 / 0.48
5.3	Lowering speed, with/without load	m/s	0.50 / 0.50
5.5	Rated drawbar pull, with/without load	N	27100 / 37300
5.7	Gradeability, with/without load	%	24 / 27
5.10	Service brakes (mechanical/hydraulic/electric/pneumatic)		Hydraulic
<b>IC Engine</b>			
7.1	Manufacturer / Type		S6S
7.2a	Rated / Nominal output to ISO 1585	kW	70
7.3	Rated speed to DIN 70 020	rpm	2300
7.4	Number of cylinders / cubic capacity	/cm <sup>3</sup>	6/4996
7.5	Fuel consumption according to VDI 60 cycle	l/h / kg/h	-
<b>Miscellaneous</b>			
8.1	Type of drive control		Torque Converter
8.2	Maximum operating pressure for attachments	bar	191
8.3	Oil flow for attachments	l/min	-
8.4	Noise level, value at operator's ear (EN 12053)	dB(A)	86.5
8.5	Towing coupling design / DIN type, ref.		Pin

\* Fuel consumption and noise data available on request



- Ast =  $W_a + x + l_6 + a$
- Ast = Working aisle width with load
- a = Safety clearance (200 mm)
- l6 = Pallet length (800 or 1000 mm)
- b12 = Pallet width (1200 mm)



## Lower Cost of Ownership

- Robust steel frame designed using Finite Element Analysis gives durable structure with low centre of gravity, resulting in higher residual capacity.
- Fully floating drive axle adds extra durability and capacity compared to semi- or non-floating alternatives.
- Steer axle construction as a single solid unit maximises strength and rigidity.
- Dependable engine and strong resistance of all truck components to damage and wear helps minimise repair and service bills.
- Easy and quick access to all areas for routine checks and maintenance keeps truck in sound working condition, saves time and reduces expense.

## Unmatched Productivity

- Powerful S6S in-line 6-cylinder 5.0 litre diesel engine, proven through many years of service in Cat® lift trucks, provides high torque and reliable response.
- Powershift transmission offers two forward and two reverse gears to tackle every task effectively.
- Design of frame and counterweight optimises weight positioning and residual capacity for strong lifting.

## Safety and Ergonomics

- Noise and vibration limitation features include rubber-mounted key components and special design of transmission gears.
- Fully hydrostatic assisted steering via small-diameter steering wheel ensures accurate and rapid response with little effort.
- Counterweight design allows small turning circle and clear view to the rear for precise manoeuvring.
- Mast with narrow channels and small-diameter lift cylinders increases forward vision and uses six load rollers with side rollers to achieve high load stability.
- Choice of up-to-date, ergonomic fingertip or lever controls is available for precise, low-effort operation of hydraulic functions.
- Presence Detection System (PDS) gives audible warning if seat belt is not fastened and prevents all travel and hydraulic movement if operator is not correctly seated.
- Vacuum-boosted hydraulic brakes increase braking efficiency and safety.
- Tilttable steering column, adjustable full-suspension seat and generous leg room allow each user to find the perfect driving position.
- Conveniently placed grab bars and steps ease access to operator compartment.

## Options

- Fully enclosed cabin with air conditioning and heating.
- Wide range of sidershifters and fork positioners.
- Variety of working light options for front and rear.
- Rear mirror kits for overhead guard and fender.
- Options for dusty working environment.

# Cat® Lift Trucks.

Your partner in materials handling.

DP70NMS						
Mast Type	h3	h1	h4	h2/h5	Tilt angle Fwd./Bwd. deg	Q @ c = 600mm kg
	mm	mm	mm	mm		
Simplex	3000	2570	4280	200	6 / 12	7000
	3300	2720	4580	200	6 / 12	7000
	3500	2820	4780	200	6 / 12	7000
	3700	2920	4980	200	6 / 12	7000
	4000	3070	5280	200	6 / 12	7000
	4500	3320	5780	200	6 / 12	7000
	5000	3670	6280	200	6 / 12	7000
	5500	3920	6780	200	6 / 6	6700
	6000	4170	7280	200	6 / 6	6400
Triplex	6500	4420	7780	200	6 / 6	6200
	3700	2370	4980	1150	6 / 6	6200
	4000	2470	5280	1250	6 / 6	6200
	4300	2570	5580	1350	6 / 6	6200
	4500	2640	5790	1420	6 / 6	6200
	4700	2720	5980	1500	6 / 6	6200
	5000	2820	6280	1600	6 / 6	6200
	5500	3070	6780	1850	6 / 6	6000
6000	3240	7290	2020	6 / 6	5700	

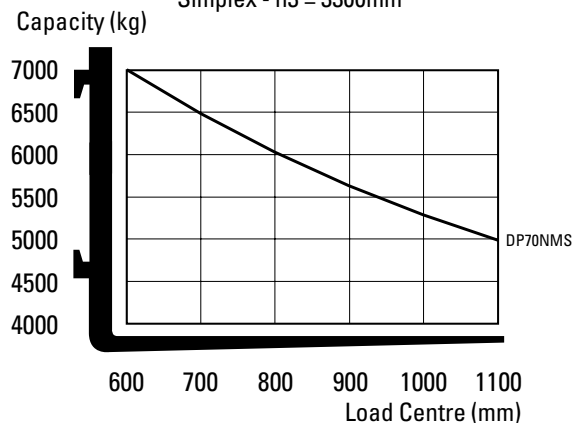
## Mast Performance and Capacity

- h1 Height with mast lowered
- h2 Standard free lift
- h3 Lift height
- h4 Height with mast raised
- h5 Full free lift
- Q Lifting capacity, rated load
- c Load centre (distance)



## Capacities at various load centres

Simplex - h3 = 3300mm



[info@catliftruck.com](mailto:info@catliftruck.com)  
[www.catliftruck.com](http://www.catliftruck.com)

CESC1738AME-S(06/15)

©2015, MCFE. All rights reserved.

CAT, CATERPILLAR, BUILT FOR IT, their respective logos, "Caterpillar Yellow", the "Power Edge" trade dress as well as corporate and product identity used herein, are trademarks of Caterpillar and may not be used without permission.

Printed in The Netherlands

NOTE: Performance specifications may vary depending on standard manufacturing tolerances, vehicle condition, types of tyres, floor or surface conditions, applications, or operating environment. Trucks may be shown with non-standard options. Specific performance requirements and locally available configurations should be discussed with your Cat lift trucks Dealer. Cat Lift Trucks follows a policy of continual product improvement. For this reason, some materials, options and specifications could change without notice.

